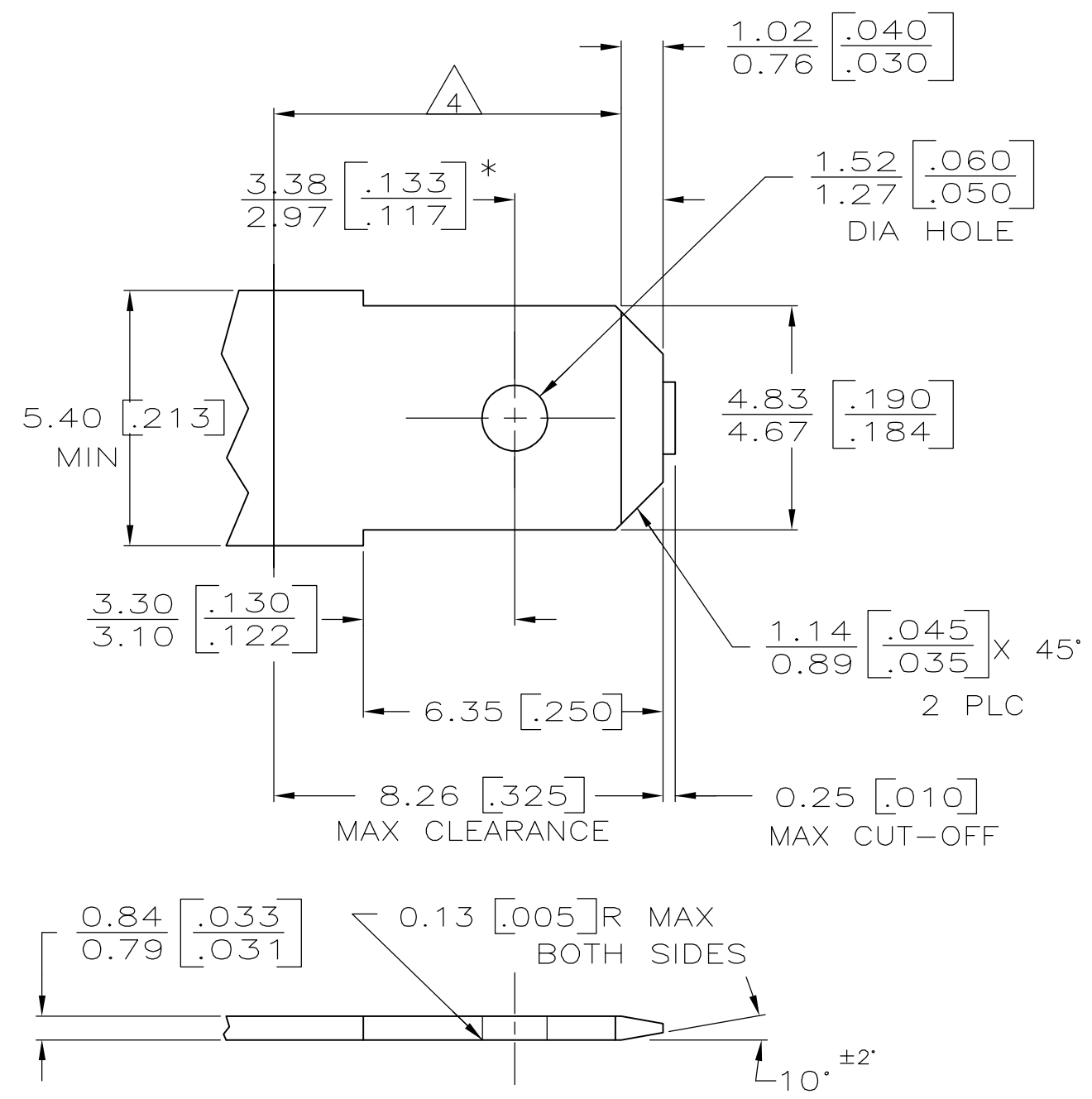
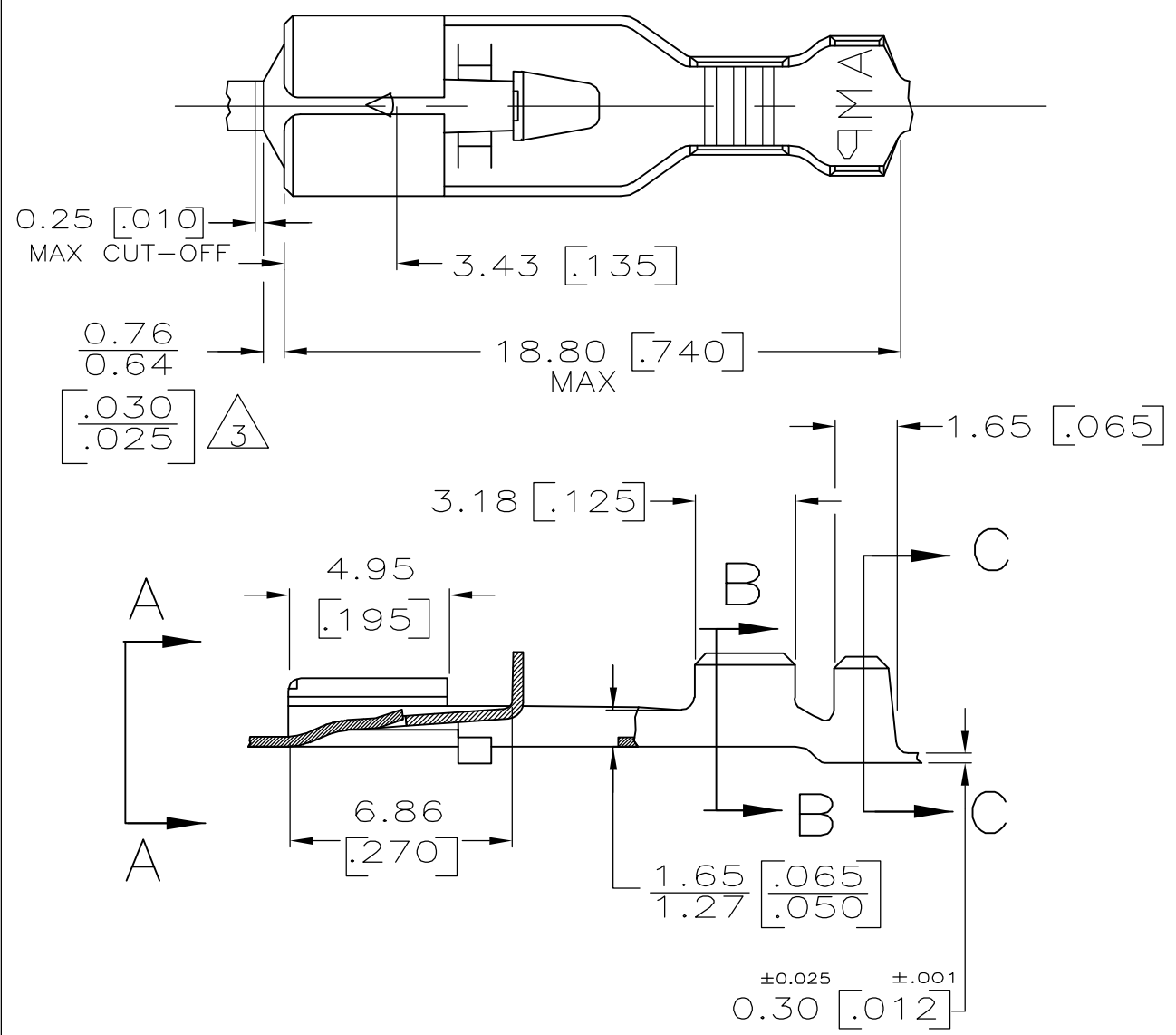


LOC		DIST		REVISIONS			
AF	50	P	LTR	DESCRIPTION	DATE	DWN	APVD
		C2		REV PER ECR-06-022321	05OCT06	HMR	EH

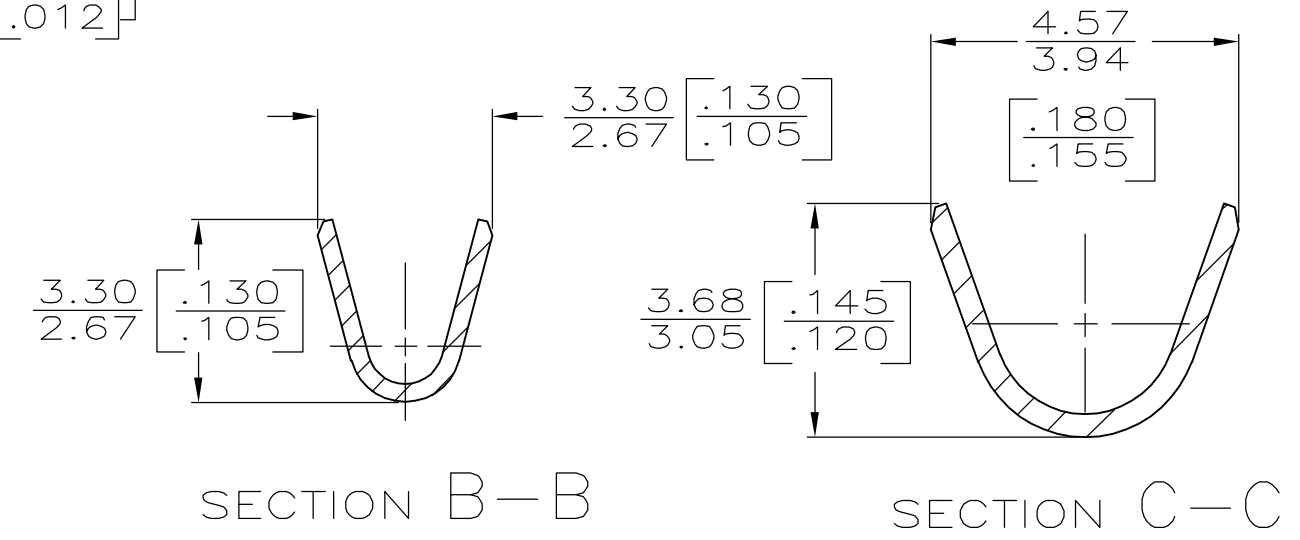
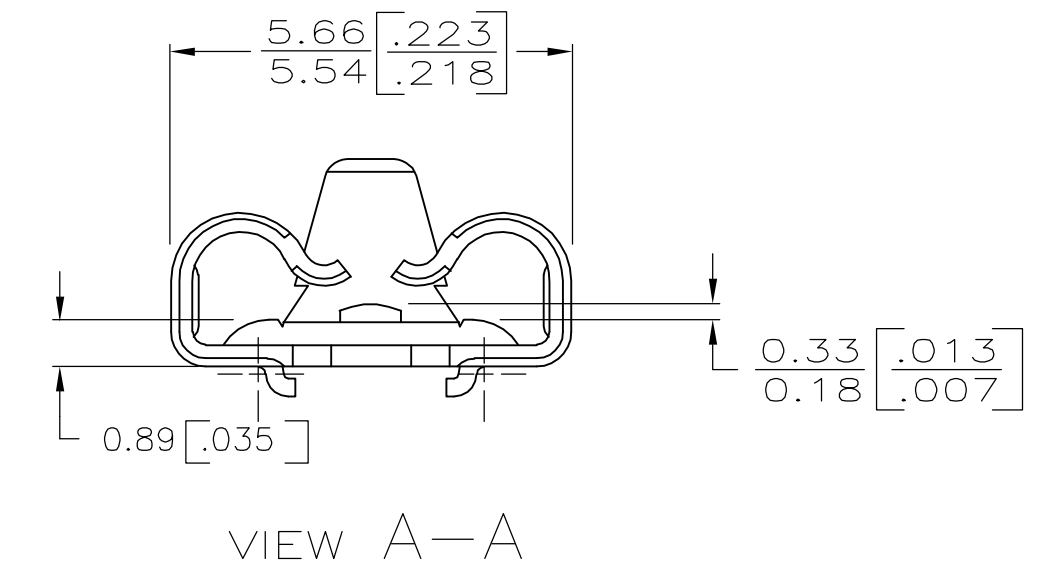
SUGGESTED MATING TAB



- MATL: #2 HARD BRASS OR NICKEL PLATED STEEL.
 - NO BURRS PERMISSIBLE AT HOLE.
 - TIN PLATING IS REQUIRED ON BRASS WHEN TERMINAL TEMPERATURE IS OVER 225° F.
 - MUST BE FLAT WITHIN 0.076 [.003] OVER THIS LENGTH.
 - HOLE MUST BE SYMMETRICAL ABOUT TAB \perp WITHIN 0.076 [.003].
- * TO BE USED ONLY WHEN SHOULDER IS ELIMINATED.



- DIMENSIONS IN BRACKETS ARE IN INCHES.
- CONTINUOUS STRIP ON REELS.
- THIS DIMENSIONS MUST BE MAINTAINED FOR PROPER FUNCTION OF THE LATCHING MECHANISM.
- WIRE SIZE IS 0.5-1.4mm [20-16] AWG
- INSULATION RANGE IS 1.52-2.79 [.060-.110] DIA
- TIN PLATE 0.002032 [.000080] MIN THK



F OR O	3.56 [.140]	4.78 [.188]	F	2.29 [.090]	1.448 [.057]	1.3mm [.16]
					1.27 [.050]	0.8mm [.18]
					1.143 [.045]	0.5mm [.20]
TYPE	WIDTH	STRIP LENGTH ±.015	TYPE	WIDTH	±.051 [±.002] HEIGHT	WIRE
INSUL BARREL CRIMP	WIRE BARREL CRIMP					

-	63498-2
	63498-1
FINISH	PART NO.

THIS DRAWING IS A CONTROLLED DOCUMENT.		DWN	JR RUTH	10/12/89		Tyco Electronics Corporation	
		CHK	MS FEHER	10/12/89		Harrisburg, PA 17105-3608	
DIMENSIONS: mm [INCHES]		APVD	R KUZO	10/12/89	RECEPTACLE, POSITIVE LOCK, 4.75 [.187] SERIES		
TOLERANCES UNLESS OTHERWISE SPECIFIED:		PRODUCT SPEC		SIZE CAGE CODE DRAWING NO RESTRICTED TO			
0 PLC ± -		APPLICATION SPEC		A2 00779 C-63498			
1 PLC ± -		WEIGHT		SCALE 5:1 SHEET 1 of 1 REV C2			
2 PLC ± -		CUSTOMER DRAWING					
3 PLC ± 0.25 [.010]							
4 PLC ± -							
ANGLES ± -							
FINISH SEE TABLE							